



THERDEX MODULAR

Loose Lay and Rigid Click floors



THERDEX MODULAR FLOORING

A smart solution

A floor offers years of comfort. The focus with Therdex is on user convenience, which already starts when laying the floor.

Therdex Rigid Click floors are very easy to install, and eliminates the need for adhesives thanks to a reliable Uniclic system.

Our Loose Lay floors offer convenience and comfort through the quick and easy way of laying. Because of their weight, the planks and tiles are laid loose.

Therdex Modular floors are thus reusable, easy to (dis)assemble and replace. This makes Therdex valued among architects, designers and interior lovers looking for a distinctive and durable for project floors.

WHY SELECT OUR MODULAR FLOORING?

These versatile floors are a smart choice for those searching for a durable, stylish and functional flooring solution.

01

USABILITY

Therdex Modular floors are suitable for intensive project use such as office, hospitality and retail. Maintenance of the easy-to-use floors is simple. In addition, the floor reduces impact noise, lowering the noise level in the room. Therdex Modular floors offer the perfect solution for functional use.

02

INSTALLATION

The installation of Therdex Modular floors is easy and quick, unlike LVT floors, the use of glue is unnecessary. Because of weight, the Loose Lay planks and tiles are placed loose on the substrate. Rigid Click planks and tiles interconnect via a reliable Uniclic system.

03

PRODUCT SOLUTION

Modular floors are designed to be safe and long-lasting. The strong top layer of 0.55 mm ensures maximum wear resistance, making the floors ideal for intensive project use. In addition, we value reliability. That is why we only use safe bio softeners made from sustainable soybean oil.

04

EXPERIENCE

When you choose Therdex, you choose a floor with a natural appearance. By offering a wide range of unique designs, the floors match any interior. With Therdex, you not only get a durable and functional floor, but also a stylish and natural look that contributes to the atmosphere and appearance of the room.

05

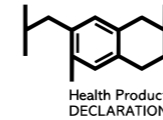
CIRCULAR

Modular floors are a circular choice for your flooring solution. This is because the flooring is easy to disassemble, which can be renovation and reuse simplifies. The modular design of our floors allows parts of the floor to be replaced or reused, reducing waste and lowering the carbon footprint.

PERFORMANCE



Delivering a top-notch product also involves caring for the environment. The environment belongs to all of us, everywhere in the world. We should handle it with care. This is why we place great importance on testing and approving our products. Naturally, our products comply with the mandatory labels, but in addition to these mandatory labels, we also have our products tested at test institutes that are not mandatory.



HEALTH PRODUCT DECLARATION COLLABORATIVE

HPDC is an independent body that provides a record of the content of the materials. Through HPD, production reports what products are used and what risks consumers should be aware of. Therdex is in possession of 'The Health Product Declaration'.



LEADER IN ENERGY AND ENVIRONMENTAL DESIGN

LEED stands for green buildings with the best building strategies. When building projects adequately meet the conditions, they are eligible for LEED certificates. Therdex is FloorScore, EPD and HPD certified. This means that by using Therdex floors in architectural and design projects, one can qualify for LEED.



INDOOR AIR COMFORT GOLD

By meeting all requirements, a company creates a healthy indoor environment. This is what the Eurofins label stands for. Our floors meet the highest health and product standards, following criteria of world-leading building organisations such as: agBB, VOC emission class A, BREEAM Internat. Factory inspections are in accordance with DIN 18200, the VOC test in accordance with EN 16516 and the ISO 16000 series.



ENVIRONMENTAL PRODUCT DECLARATION (EPD)

EPD is a comprehensive report, which details how a product affects the environment during its life cycle. The SPD is in accordance with the standards developed by ISO. All Therdex floors are third-party verified for UL Environment EPDs.



FLOORSCORE

FloorScore tests and certifies all hard floors and floor adhesives. They ensure that the products meet the requirements for indoor air quality emissions. All Therdex floors are FloorScore certified for low VOC (Volatile Organic Compounds).



BREEAM

BREEAM is an international standard for rating buildings on sustainability and energy efficiency. Our Therdex floors can be applied to BREEAM new buildings and existing buildings.



ECO+ PHTHALATE-FREE BIO-BASED CONTENT

Therdex uses an organic plasticiser based on soybean oil. This is a phthalate substitute. As a result, Therdex does not use phthalates and has therefore been awarded the Eco+ phthalate-free certificate.

ISO 9001 certified

ISO 9001

The ISO 9001 standard is an internationally recognised standard in the field of quality management. The standard provides guidelines to good quality management and specifies what a good system should meet.

ISO 14001 certified

ISO 4001

The ISO 4001 standard consists of internationally accepted requirements for an environmental management system. The environmental management system is used to develop an appropriate environmental policy for an organisation.

LOOSE LAY



Loose Lay offers convenience and comfort through the fast and easy way of laying. Because of the weight, the boards and tiles are laid loose. The durable quality of LVT ensures that the floor will last a long time, even with intensive use. This makes this series ideally suited for project purposes.

Type	Loose Lay
Embossing	universal embossed
Dimension	tiles 50x50 cm
Content	8 pcs. 2 m ²



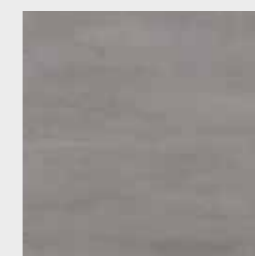
FACTS

- very easy to install
- no use of adhesives required
- suitable for heavy-duty use
- ideal for project purposes
- non-slip underlayer
- easy dismantling
- easy to use
- reduced impact sound
- moisture-resistant
- scratch-resistant
- maintenance-friendly
- prevents stripping

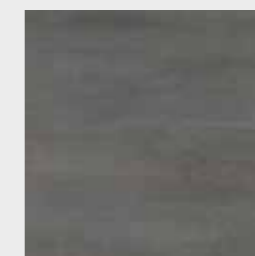
Tiles



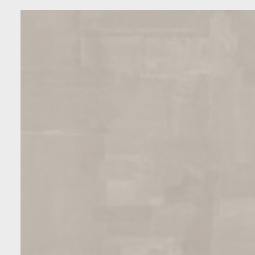
LL5041



LL5042



LL5044



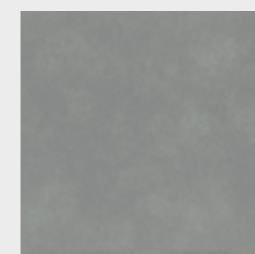
LL5051



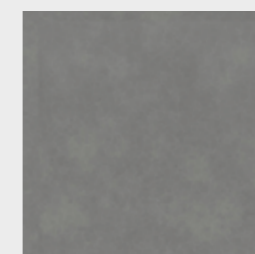
LL5052



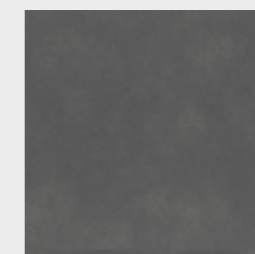
LL5053



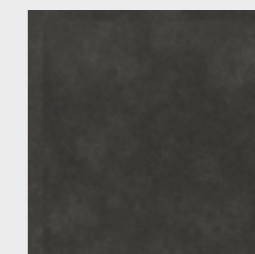
LL5022



LL5023



LL5024



LL5025

LOOSE LAY



Loose Lay offers convenience and comfort through the fast and easy way of laying. Because of the weight, the boards and tiles are laid loose. The durable quality of LVT ensures that the floor will last a long time, even with intensive use. This makes this series ideally suited for project purposes.

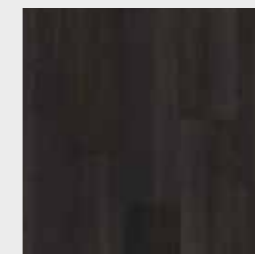
Type	Loose Lay
Embossing	universal embossed
Dimension	planks 20x100 cm
Content	8 pcs. 1,60 m ²



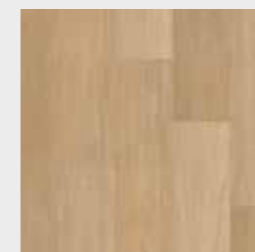
Planks



LL1074



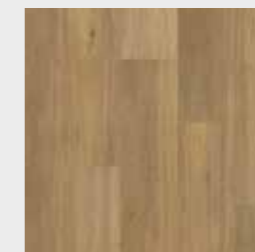
LL1076



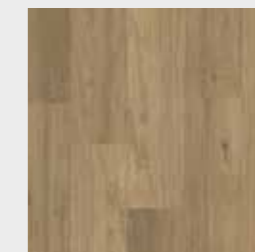
LL10241



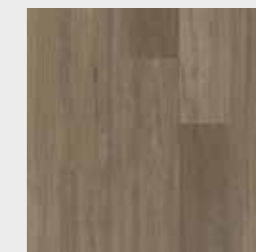
LL10242



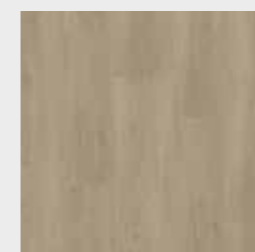
LL10243



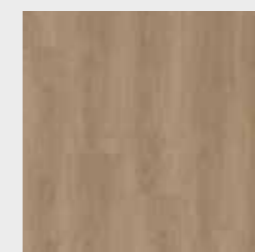
LL10244



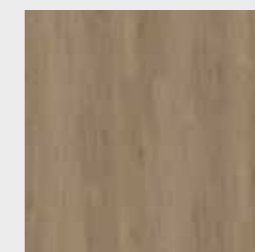
LL1034



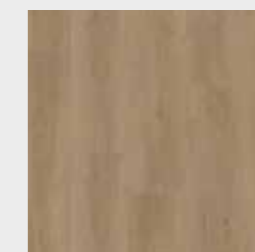
LL10151



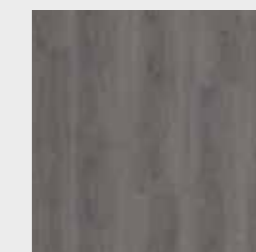
LL10152



LL10153



LL10154



LL10155

RIGID CLICK



C10013

Rigid Click floors use a smart installation solution, eliminating the use of glue. The planks or tiles are easily clicked together with a reliable Uniclic system. Available in tiles, herringbone, chevron and various sizes of planks.

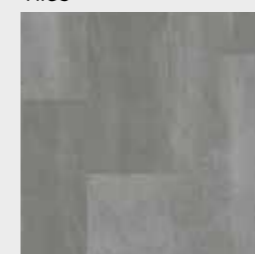
Type	Rigid Click
Embossing	universal embossed
Dimension	tiles 45x90 cm
Content	4 pcs. 1,638 m ²

FACTS



- powerful Uniclic system
- very easy to lay
- no need to use glue
- suitable for intensive use
- light weight
- easy to move
- great ease of use
- reduced impact sound
- moisture-resistant
- scratch-resistant
- maintenance-friendly
- prevents striping

Tiles



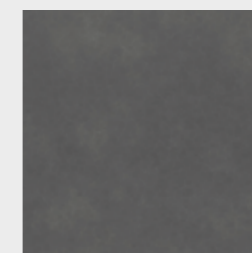
C4511



C4512



C10022



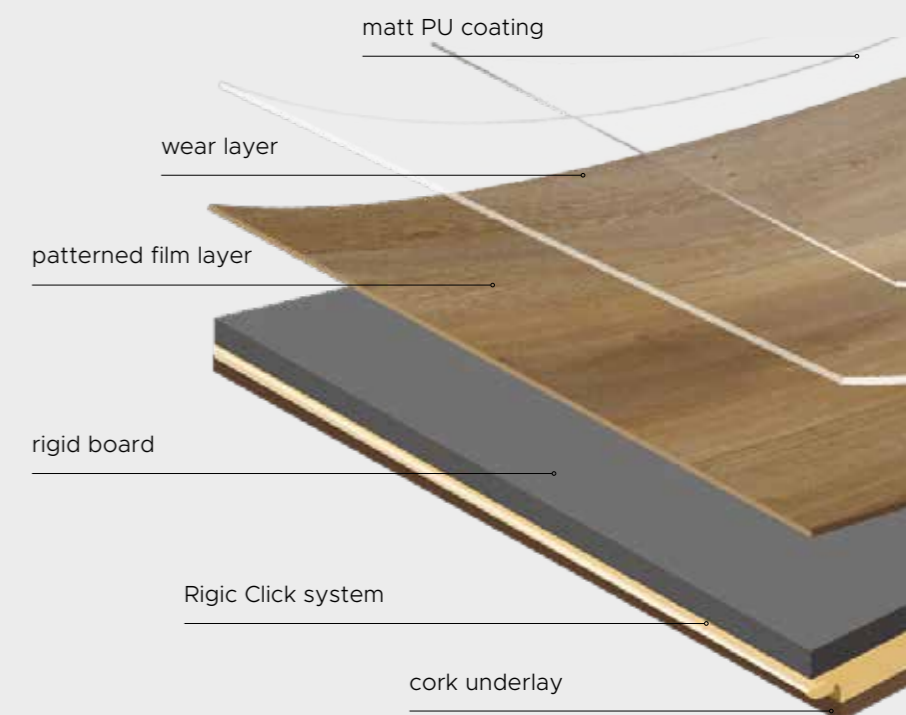
C10023



C10013



C10016



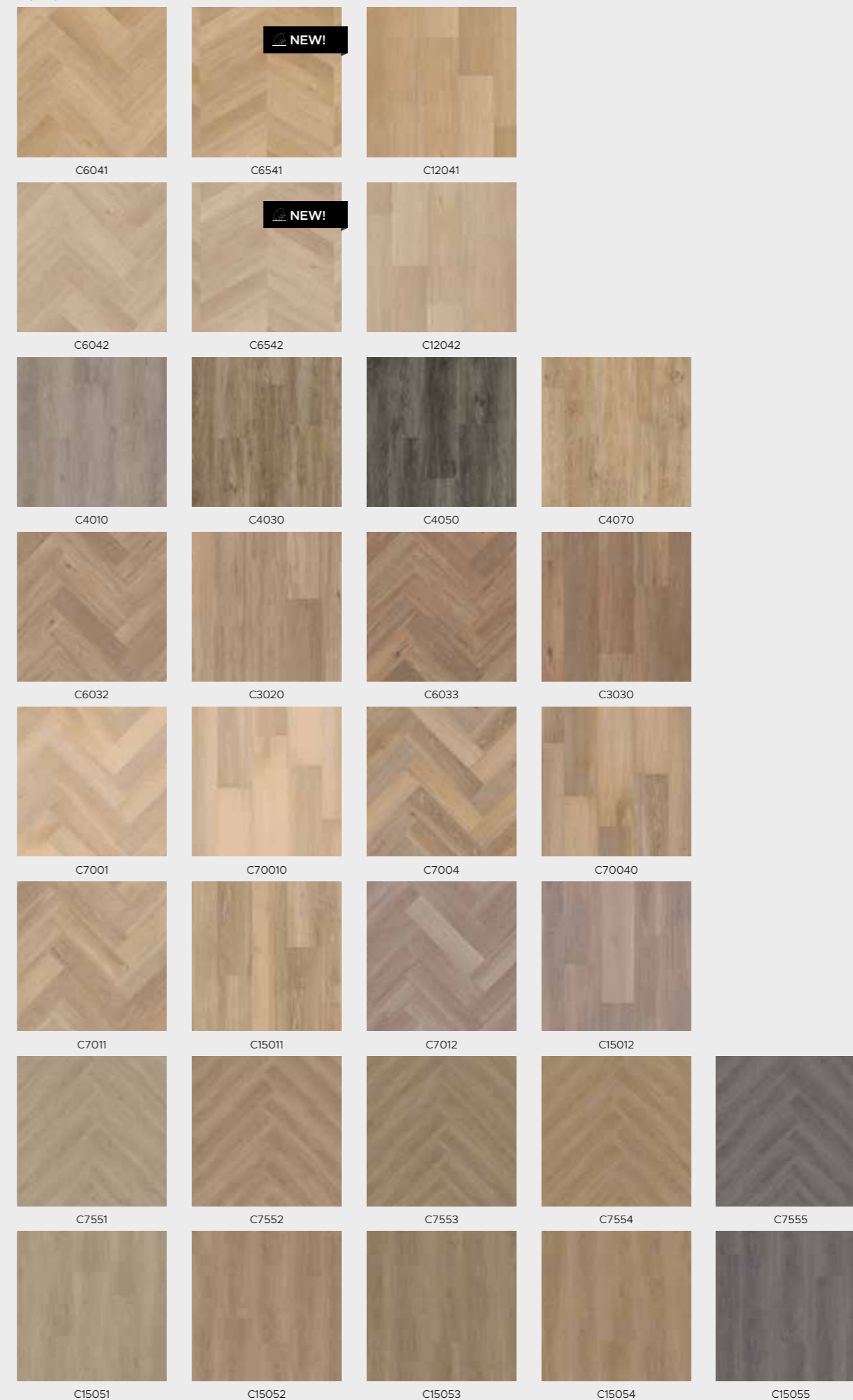
RIGID CLICK



Rigid Click floors use a smart installation solution, eliminating the use of glue. The planks or tiles are easily clicked together with a reliable Uniclic system. Available in tiles, herringbone, chevron and various sizes of planks.

Type	Rigid Click	
Embossing	universal and registered embossed	
Dimension	planks 22x121 cm	planks 23x152 cm
Content	6 pcs. 1,617 m ²	6 pcs. 2,139 m ²
	herringbone 15x75 cm	chevron 15x66 cm
	10 pcs. 1,080 m ²	12 pcs. 1,158 m ²

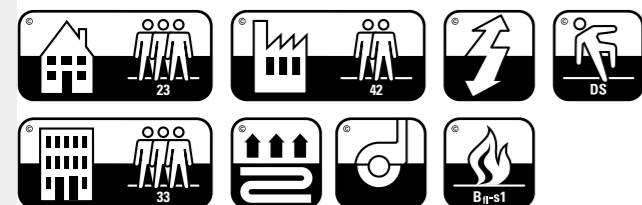
Planks



LOOSE LAY

FEATURES	STANDARD	PLANKS	TILES
Floorcovering	DIN EN ISO 10582	Heterogeneous LVT floorcovering	Heterogeneous LVT floorcovering
Finishing		matt PU lacquer	matt PU lacquer
Design		Wood	Concrete
Embossing		Universal Embossed	Universal Embossed
Colours		12	10
Dimension	EN 427	100x20 cm	50x50 cm
Bevelling		all sides	all sides
Content		8 pieces (1,60 m ²)	8 pieces (2,00 m ²)
Article numbers		LL1034 LL1074 LL1076 LL10241 LL10242 LL10243 LL10244 LL10151 LL10152 LL10153 LL10154 LL10155	LL5041 LL5042 LL5044 LL5051 LL5052 LL5053 LL5022 LL5023 LL5024 LL5025
Weight	EN ISO 23997	ca. 9050 g/m ²	ca. 9050 g/m ²
Thickness	EN ISO 24346	5,0 mm	5,0 mm
Thickness PU	EN ISO 24340	0,55 mm	0,55 mm
Classification	EN ISO 10874	23, 33, 42	23, 33, 42
Fire classification	EN 13501-1	Bfl-S1	Bfl-S1
Slipresistance	DIN 51130 EN 14041	R10 DS	R10 DS
Weargroup	EN 649	T	T
Residual indentation	EN ISO 24343-1	< 0,1 mm	< 0,1 mm
Dimension stability	EN 434	< 0,25%	< 0,25%
Soundreduction	EN ISO 10140-3	ca. 8 dB(A)	ca. 8 dB(A)
Thermal conductivity	EN 12667	0,021 m ² k/w	0,021 m ² k/w
Electrical conductivity	EN 1081	app 10 ¹¹ Ohm	app 10 ¹¹ Ohm
Suitable for castor chairs	EN ISO 4918	Yes, type W	Yes, type W
Floor heating	EN14041	Yes, max. 27°C	Yes, max. 27°C
Colourfastness	ISO 105-B02	6> Grade	6> Grade
Resistance to chemicals	EN 423 EN ISO 26987	Yes, see 1	Yes, see 1
Odor control	ISO 16000-28	Suisse Norm SNV	Suisse Norm SNV
AgBB VOC test		approved	approved
REACH regulation (EC)		1907/2006	1907/2006
CE, AGBB, Dibt, Eurofins, Floorscore, A+, ISO9001, ISO14001		Yes	Yes

¹Resistance depending on concentration and exposure time, with prolonged action of oils, fats, acids, alkalis and other aggressive chemicals please contact us.

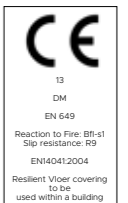


RIGID CLICK

FEATURES	STANDARD	PLANKS	HERRINGBONE	CHEVRON	TILES
Floorcovering	EN 649	Heterogeneous LVT floorcovering	Heterogeneous LVT floorcovering	Heterogeneous LVT floorcovering	Heterogeneous LVT floorcovering
Finishing		matt PU lacquer	matt PU lacquer	matt PU lacquer	matt PU lacquer
Design		Wood	Wood	Wood	Concrete
Embossing		Universal C3020 C3030 Registered C4010 C4030 C4050 C4070 C12041 C12042 C15011 C15012 C15051 C15052 C15053 C15054 C15055 C70010 C70040	Universal C6032 C6033 C6041 C6042 C7001 C7004 Registered C7011 C7012 C7551 C7552 C7553 C7554 C7555	Universal Embossed	Universal Embossed
Colours		17	13	2	6
Dimension	EN 427	121,30x22,20 cm C3020 C3030 C4010 C4030 C4050 C4070 C12041 C12042 C70010 C70040 23,60x151,80 cm C15011 C15012 C15051 C15052 C15053 C15054 C15055	14,50x74,30 cm	66,55x14,50 cm	45,10x90,80 cm
Bevelling		all sides	all sides	all sides	all sides
Content		6 pcs. (1,617 m ²) 120x24 cm 6 pcs. (2,139 m ²) 150x24 cm	10 pcs. (1,080 m ²)	12 pcs. (1,158 m ²)	4 pcs. (1,638 m ²)
Weight	EN 430	ca. 9600 g/m ²	ca. 9600 g/m ²	ca. 9600 g/m ²	ca. 9600 g/m ²
Thickness	EN 428	6,0 mm	6,0 mm	6,0 mm	6,0 mm
Thickness PU	EN 429	0,55 mm	0,55 mm	0,55 mm	0,55 mm
Classification	EN 685	23, 34	23, 34	23, 34	23, 34
Fire classification	EN 13501	Bfl-S1	Bfl-S1	Bfl-S1	Bfl-S1
Slipresistance	DIN 51130 EN 13893	R10 DS	R10 DS	R10 DS	R10 DS
Weargroup	EN 649	T	T	T	T
Residual indentation	EN 433	< 0,1 mm	< 0,1 mm	< 0,1 mm	< 0,1 mm
Dimension stability	EN 434	< 0,10%	< 0,10%	< 0,10%	< 0,10%
Soundreduction	EN140-8	ca. 11 dB(A)*	ca. 11 dB(A)*	ca. 11 dB(A)*	ca. 11 dB(A)*
Thermal conductivity	EN12667 DIN 52612	0,02 m ² k/w	0,02 m ² k/w	0,02 m ² k/w	0,02 m ² k/w
Electrical conductivity	EN 1081	app 10 ¹¹ Ohm	app 10 ¹¹ Ohm	app 10 ¹¹ Ohm	app 10 ¹¹ Ohm
Suitable for castor chairs	EN 425	Yes, type W	Yes, type W	Yes, type W	Yes, type W
Floor heating	EN14041	Yes, max. 27°C	Yes, max. 27°C	Yes, max. 27°C	Yes, max. 27°C
Colourfastness	ISO 105-B02	6> Grade	6> Grade	6> Grade	6> Grade
Resistance to chemicals	EN 423 EN ISO 26987	Yes, zie 1	Yes, zie 1	Yes, zie 1	Yes, zie 1
Odor control	ISO 16000-28	Suisse Norm SNV	Suisse Norm SNV	Suisse Norm SNV	Suisse Norm SNV
AgBB VOC test		approved	approved	approved	approved
REACH regulation (EC)		1907/2006	1907/2006	1907/2006	1907/2006
CE, AGBB, Dibt, Eurofins, Floorscore, A+, ISO9001, ISO14001		Yes	Yes	Yes	Yes

¹Resistance depending on concentration and exposure time, with prolonged action of oils, fats, acids, alkalis and other aggressive chemicals please contact us.

* In combination with Redfloor





PGVZ | KAMPEN
Realized by Interiorboost
Rigid Click

C6042



KONINGS OPTIEK
Realized by LODD interieurarchitecten
Loose Lay LL5053



HOLLAND WATER
Gerealiseerd door THIES Design
Rigid Click C3020



TERMEER GROEP HQ

Realized by Yksi Ontwerp

Rigid Click

C7011



HAVEP | HEAD OFFICE
Realized by Paul de Ruiter Architects
Rigid Click C10013



SIMON-KUCHER & PARTNERS

Realized by DZAP

Rigid Click

C7001





VAN DER VALK | SCHIEDAM
Realized by Horeca Sfeermakers
Rigid Click C12041, C6041




INSTALLATION INSTRUCTIONS



View installation instructions per floor type via the QR codes below.

 **LOOSE LAY**



installation instructions

 **RIGID CLICK**





installation instructions movie installation instructions


CONTACT

There is always a Therdex retailer near you, who knows everything about LVT flooring and the Therdex collections inside out. Feel free to make a visit. Our retailers will be happy to advise you.


Would you like to become a dealer? Then contact one of our agents.

 +31 (0)38 385 7373

 info@therdex.nl

 Sasdijk 14
8281BM Genemuiden
Netherlands



 www.therdex.com



Therdex | Sasdijk 14 | 8281 BM Genemuiden | The Netherlands
+31 (0)38 385 7373 | info@therdex.nl | www.therdex.com

No rights may be derived from this brochure. Misprints and printing errors excepted. The colours illustrated may differ from reality. We therefore recommend that you make your choice on the basis of samples. You can obtain these, free of charge and without obligation, from your dealer or via www.therdex.com.