



therdex



**LAYING INSTRUCTIONS**  
**DESIGN**

## **INSPECTION SURFACE**

Always check if the surface is a permanently dry, crack-free, tensile and pressure-resistant, flat floor. The floor has to be clean and free of substances that could effect the adhesion of the glue. If needed, the surface has to be primed and levelled. Common surfaces like cement screeds, anhydrite, mastic asphalt and concrete is advised to be primed with UZIN PE 360 and levelled with UZIN NC 170. Ask your supplier for the best solution for each situation.

## **STORAGE**

Make sure that the material is always placed on a flat surface. If the material is not stored flat, this will lead to problems during installing of the LVT.

## **AVOID COLOUR DIFFERENCES**

Only material from the same production batch may be processed per space.

## **CHECKING THE PROCESSED MATERIAL**

The floor covering is carefully inspected before leaving the factory, so a high quality standard can be guaranteed. However, we can not guarantee the 100% exclusion of defects. Therefore, always check the material for visible defects before processing.

## **MIXING PLANKS**

By mixing planks from different packages before laying the floor, it is avoided for two or more equal planks to be laid next to each other.

## **ACCLIMATIZE - IMPORTANT**

LVT is in constant movement. Adjusting the material to the climatic conditions is very important. In order to give the material sufficient opportunity to relax, the planks (without packaging) have to be laid for at least 48 hours in the space to be processed, on small stacks, in order to adapt to the room and temperature. The ideal temperature for processing is around 18°C, the air humidity can not exceed 70%.

## **PROCESSING**

We advice you to use the following adhesive for the installation of LVT floor:

- Planks > 150 cm: fiber reinforced adhesive - UZIN KE66 (or equivalent)
- Tiles with fiber reinforced adhesive - UZIN KE66 (or similar)
- Planks < 150 cm with dispersion adhesive - UZIN 2000S (or equivalent)

The adhesive must be applied according to the adhesive manufacturer's advice.

At the entrance and in rooms where the expected temperature and/or the amount of moisture is higher, we recommend a polyurethane glue (moisture and temperature resistant).

Apply the adhesive with the specified teeth. Place the floor covering in the wet glue, the open time of the applied glue is 15 to 20 minutes, depending on temperature and relative humidity.

Do not crawl or walk on the installed floor covering, as it can slide into the wet glue. After approx. 20 minutes carefully roll the floor covering. Repeat this process after approx. 30 minutes.

## **IMPORTANT**

The processing should not be done at a temperature below 15°C. The optimum processing temperature is 18-25°C. The minimal surface temperature is 15°C. The maximum relative humidity: 75%.

## **FLOOR HEATING**

Therdex LVT floors can be installed on a floor with underfloor heating with a water temperature up to 27°C.

PLEASE NOTE: during installation the floor heating does not have to be turned off completely. Make sure the floor heating is set to approx. 15-18°C.

In screed containing floor heating, cracks may form. To reduce the risk of cracks as much as possible, it is necessary to bring the floor heating up to temperature slowly and gradually after installation of the flooring. It is advised to follow our heating and cooling protocol. This protocol can be found online: [www.therdex.com/downloads](http://www.therdex.com/downloads).

Therdex LVT floors can also be applied on electric floor heating. It is important to use the correct subfloor materials. Discuss this well up front with your supplier of the adhesive and egaline.

## **OTHER**

With the installation on MDF or other floating wooden subfloors (for example Jumpax) the strips should be kept free of the plinth. To install the strips on the entire floor at the correct moment in the adhesive bed, especially with MDF or other flooring wooden subfloors (for example Jumpax), we advise to work with 2 people.

Keep the climatic conditions and the temperature in the processing space in mind. The instructions are based on the average conditions. An optimal adhesive strength has been achieved when you have noticed by trail for the adhesive to have touched approx. 80% of the surface of the back of the floor covering.

Never use solvents to remove glue stains. Remove adhesive stains immediately with a damp cloth. In case of dried glue stains remove these with soap and water, if necessary with the aid of a fly sponge.

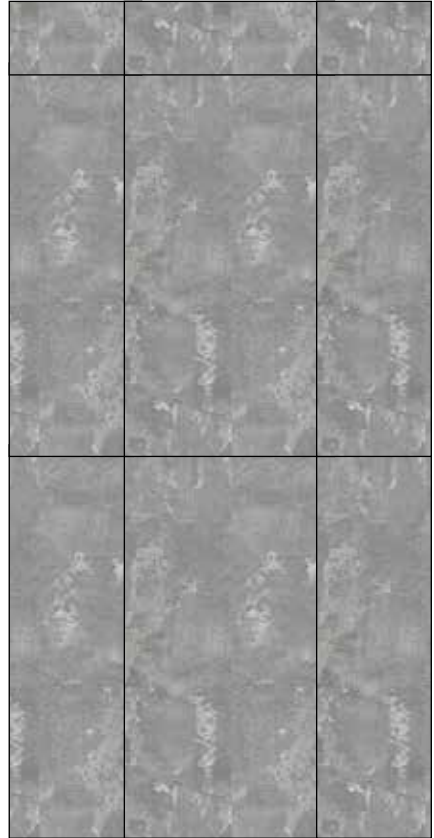
## INSTALLATION INSTRUCTIONS DESIGN MOTIF

The choice of laying method determines the final result. Please find on this page some examples to achieve the perfect result. Please show the possibilities to the client first, before starting the installation.



### SEMI-POURED INSTALLATION INSTRUCTIONS

It is important to make sure that there is no logic in the pattern! You do not have to take into account the arrows on the back of the tile.



### LAI D STRAIGHT AND CONTIGUOUS

It is important to make sure that there is no logic in the pattern! You do not have to take into account the arrows on the back of the tile.



Therdex | Sasdijk 14 | 8281 BM Genemuiden  
+31 (0)38 385 7373 | [info@therdex.nl](mailto:info@therdex.nl) | [www.therdex.com](http://www.therdex.com)